

North Avenue Reconstruction Study

Information Sheet

Public Involvement Meeting #2 | Tuesday, March 15, 2016

North Avenue (CTH M)
Calhoun Road to East County Line (124th Street)

Introduction & Study Update

Waukesha County, in cooperation with the Wisconsin Department of Transportation (WisDOT) and the Federal Highway Administration (FHWA), is evaluating alternative ways to improve safety and traffic flow on North Avenue between Calhoun Road on the west and 124th Street on the east. While the County is investigating alternatives for this entire 3-mile corridor, only the portion of the corridor between Pilgrim Parkway and 124th Street (2 miles) is currently scheduled for reconstruction (in 2019). Waukesha County is considering reconstruction and possible expansion of North Avenue to address growing traffic volumes, and to enhance and improve driver, bike, and pedestrian safety.

Since the first Public Involvement Meeting last August, the study team has been gathering project information including survey of existing features along the corridor, counting traffic along North Avenue and at major intersections, and conducting studies including research on potentially historic and archaeological resources, traffic noise, wetlands, and other social, economic, and environmental features. Traffic studies have shown that traffic operations, congestion, and safety will continue to degrade as traffic volumes grow over the next 20-25 years. As a result, Waukesha County has developed a number of alternatives, ranging from “do-nothing” to maintenance-only, to adding capacity along North Avenue via additional travel and/or turning lanes.

The alternatives presented at this meeting include two “build” alternatives: a four-lane divided roadway with a grass median between the eastbound and westbound lanes, and a five-lane undivided roadway with continuous left-turn lane down the middle. A three-lane undivided alternative (one lane in each direction with a continuous left-turn lane down the middle) has been dismissed from further consideration because it would not efficiently or safely handle future traffic volumes.

Waukesha County encourages you to review the displays at the meeting today, and talk to study representatives about the information presented, and ask questions. Thank you for attending today’s meeting.

Anticipated Schedule

- » Study and Design Phases – May 2015 through December 2018
- » Public Hearing – Mid 2016
- » Public Involvement Meeting #3 – Early 2017
- » Real Estate Acquisition, if required – Begins Summer 2017
- » Utility Relocations, if required – Begins Summer 2018
- » Construction – Begins Spring 2019

Website

www.northavenureconstruction.org

Graphics on display at this meeting today along with information developed earlier in this study will be included on the website for further review.

Contact

Ed Hinrichs

Waukesha County Project Manager
515 W. Moreland Blvd., Room 220
Waukesha, WI 53188
ehinrichs@waukeshacounty.gov
262-548-7740

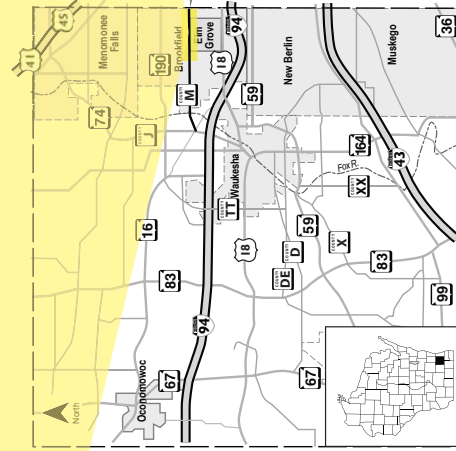
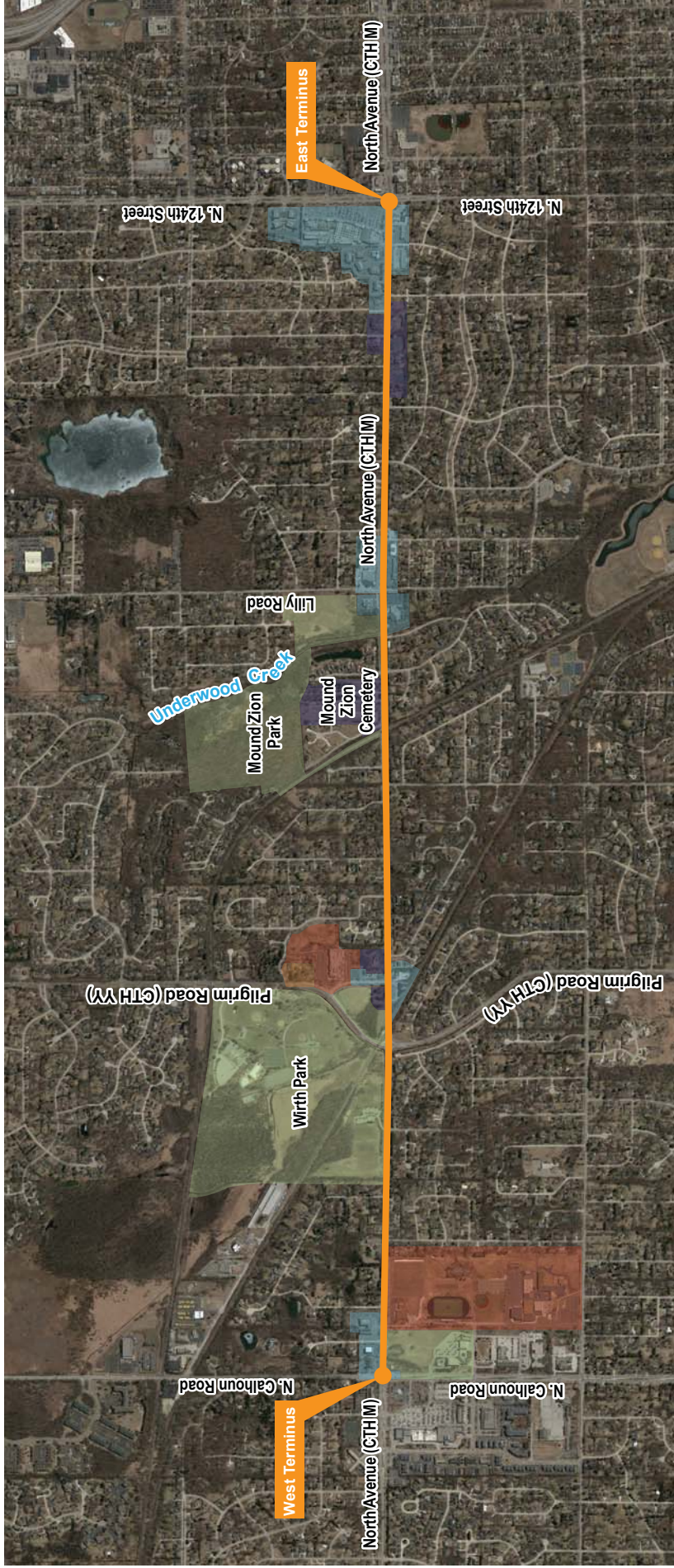
or

Charlie Webb

Consultant Team Project Manager
CH2M
135 South 84th Street, Suite 400
Milwaukee, WI 53214
charlie.webb@ch2m.com
414-847-0248

See back page for Project Location Map





PROJECT LOCATION



WAUKESHA CO.

Project Location Map